

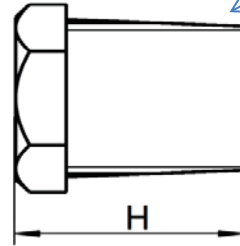
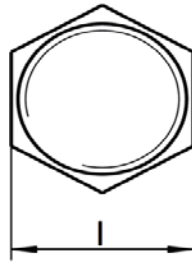
ART. 9630

Tappo maschio, aisi 316 / A4

Hexagonal plug, aisi 316 / A4

Esecuzione: Microfusione

Execution: Microcasting



Filettatura: conforme a EN 10226-1 (EX ISO 7-1)

(filetto maschio conico, filetto femmina cilindrico)

Conicità 1:16 sul diametro

Angolo del filetto 55°

Pressione massima d'esercizio 150 Lbs (Libbre) = 10,34 BAR PN10

Thread: according to EN 10226-1 (EX ISO 7-1)

(conical male thread, cylindric female thread)

Taper 1:16 on diameter

Angle of threads 55°

Maximum operating pressure 150 lbs = 10,34 Bar PN 10



Codice Articolo <i>Item Number</i>	M size	DN/ID	l (mm)	H (mm)	Box	Master carton
9630-4-1/8	1/8"	8	16,8	17,7	5	300
9630-4-1/4	1/4"	10	16,8	17,7	5	500
9630-4-3/8	3/8"	15	18	18,5	5	800
9630-4-1/2	1/2"	20	22	19,5	5	600
9630-4-3/4	3/4"	25	28	22	5	300
9630-4-1	1"	32	35	24,8	5	200
9630-4-1-1/4	1"1/4	40	44	28,8	5	130
9630-4-1-1/2	1"1/2	50	50	28,8	5	100
9630-4-2	2"	50	62	33,5	2	60